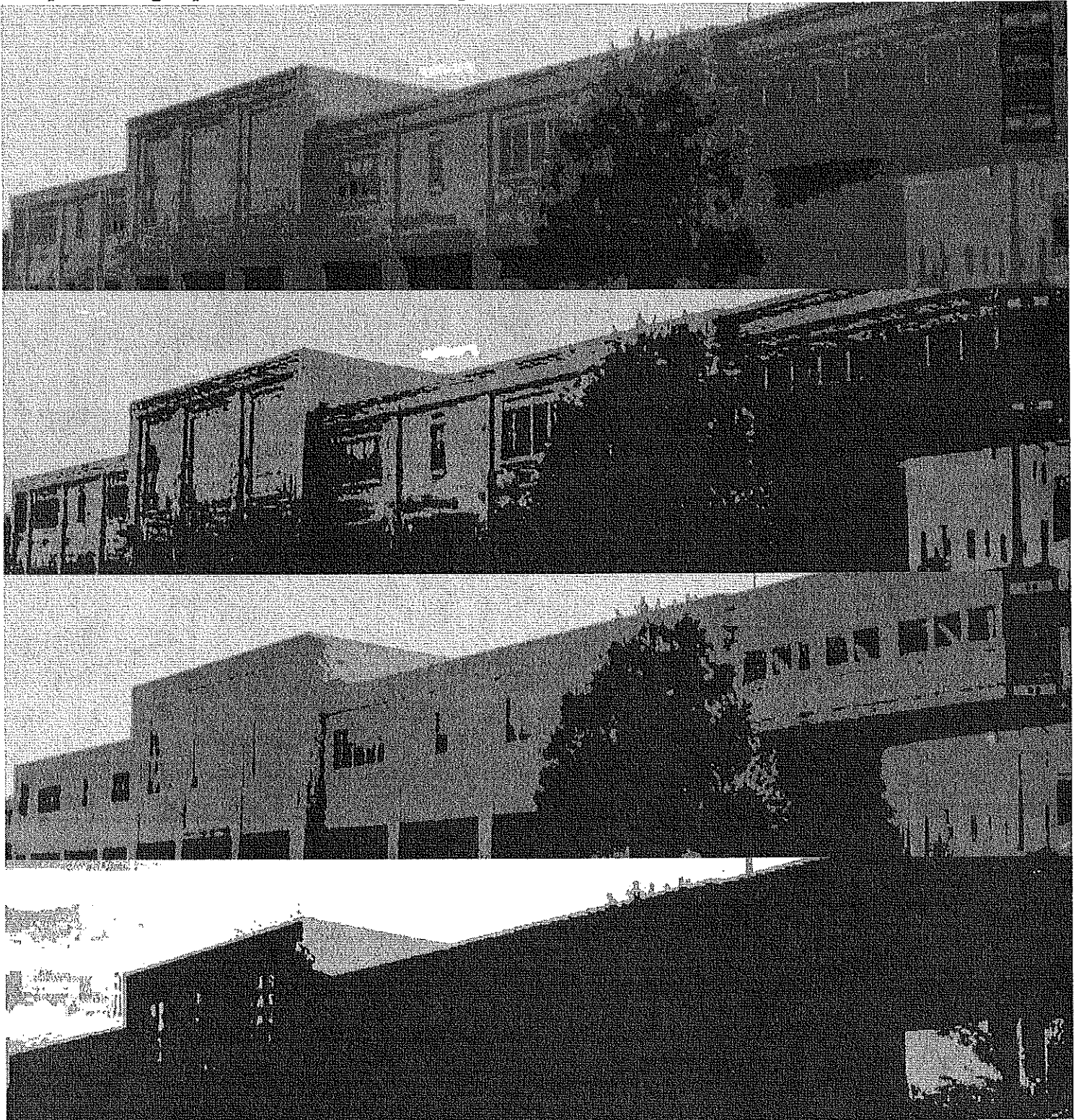


Penn Manor High School 2013 - 2014 Course Selection Guide

— **Download full descriptions on line at —**
<http://blogs.pennmanor.net/highschool/course-selection-information/>



Dear Penn Manor Students and Parents,

Penn Manor High School's goal is to prepare students for life after high school. With the changes that are occurring in our world, it is important that students carefully select challenging classes that are related to their interests, abilities and will enable them to develop necessary skills for the future. Our staff is committed to offering quality classes that will prepare students for their future goals.

In addition to the academic knowledge students need to gain through their coursework, students should develop skills that will enable them to be successful in the 21st Century. These skills are not limited to, but include, critical thinking, effective communication, collaboration across networks, and accessing and analyzing information. For this reason student should make smart decisions when selecting courses.

The full course selection guide provides everyone with a complete description of the offerings of Penn Manor High School. Students and parents should give careful consideration to the requirements for graduation and the criteria that will be used to place students in the appropriate level of classes. It is our desire to provide clear guidelines, quality programs, and rigorous classes that will enable students to achieve the necessary academic and 21st Century skills to succeed in life after high school.

Sincerely,



Philip B. Gale
Principal

TABLE OF CONTENTS

Graduation Requirements
Credit Requirements
Career Prep, College Prep, Honors and AP Course
Class Weighting For Calculation of GPA
Penn Manor High School Decile Rank Policy
Penn Manor High School Honors Program
Counseling Services
Post High School Education
Four-Year Planning Guide,
NCAA Freshman Eligibility Standards
Course Changes
Penn Manor Graduation Project
Non-Discrimination Policy
Penn Manor School Four-Year Planning Chart
English Course Offerings and Sequences
Mathematic Course Offerings and Sequences
Math Program Flow Chart
Science Course Offerings and Sequences
Social Studies Course Offerings and Sequences
Agriculture Course Offerings and Sequences
Applied Engineering and Technology Course Offerings and Sequences
Art Course Offerings and Sequences
Business Technologies Course Offerings and Sequences
Family and Consumer Sciences Offerings and Sequences
Foreign Language Course Offerings and Sequences
Learning Support Course Offerings and Sequences
Music Course Offerings and Sequences
Physical Education, Health and Safety Education Course Offerings and Sequences

GRADUATION REQUIREMENTS

All students are required to schedule four credits for each semester. Careful consideration should be given to which courses are selected so that all requirements for graduation are met and students are best prepared to meet their future goals. Every effort will be made to schedule the courses that students select. In the event of insufficient registration or facility limitations, the administration reserves the right to cancel any course or limit enrollment.

Beginning in the 2012-13 school year, the Pennsylvania Department of Education has replaced the PSSA Grade 11 tests in math, reading, science, and writing with the Keystone Exams in Algebra, Literature, and Biology. To comply with Pennsylvania School Code 4.24, students must demonstrate mastery of the PA Academic Standards for Reading and Mathematics by attaining proficiency or better on the Keystone Exams in Algebra and Literature. Beginning with the Class of 2017, students will be required by the Pennsylvania Department of Education to demonstrate proficiency on the Algebra I, Biology and Literature Keystone Exams in order to graduate.

Students who attain proficiency or better on the Keystone Exams will receive a certificate from the Pennsylvania Department of Education. Students not demonstrating proficiency in any area must participate in a district-chosen remediation program and assessments. Students who do not attain receive focused remediation in the *Reporting Categories* (assessment anchors) for which they are performing at the *Basic* or *Below Basic* levels. These students will then have opportunities to retest for identified *Reporting Categories* and be administered a district-approved and Keystone-aligned assessment. The purpose of these requirements is to assure that all students are able to apply, analyze, synthesize, and evaluate information and to communicate significant knowledge and understanding. Students in the Class of 2017 who do not demonstrate proficiency in any area must participate in a project based assessment (PBA) that will be determined by the Pennsylvania Department of Education.

I. General Graduation Requirements – Total Credits needed to graduate: 28

Social Studies - 4 credits (1 non-American history class)

English - 4 credits

Science - 4 credits

Math - 4 credits

P. E./Safety Education - 1 credit

P. E./Health - 1 credit

Graduation Project requirement

Family and Consumer Science (FCS) requirement - Beginning with the Class of 2015, the FCS standards will be met through the general education curriculum.

- **Students must be enrolled in one or more English and Social Studies courses every year.**
- **Of the four required Social Studies credits, one credit must be a non-American course.**
- **Of the four science credits, students are required to earn a credit of Earth Science, Biology, Chemistry, and Physics.**

II. Career & Technology Center Student (CTC)- Total Credits needed to graduate: 28

In order to be considered a full-day CTC student, a student must complete at least 6 credits of vocational training. A student must meet the following requirements:

Social Studies - 3 credits (including one non-American history class)

English - 4 credits (including one credit through their CTC program)

Science - 3 credits (Earth Science, Biology, Chemistry/Physics)

Math - 3 credits

P. E./Safety Education - 1 credit

P.E./Health - 1 credit

Graduation Project requirement

Family and Consumer Science (FCS) requirement - Beginning with the Class of 2015, the FCS standards will be met through the general education curriculum.

Students who attend the Introduction to Health Careers program in their senior year must earn four math and science credits and be enrolled in one or more English or social studies course every year.

- **Students are required to earn a credit of Earth Science, Biology, Chemistry, and Physics or Chemistry/Physics for students planning on attending full day CTC.**

III. Agriculture Student – Total Credits needed to graduate: 28

In order to be considered as an Ag student, a student must complete 11 credits of Agriculture in grades 9 through 12. Substitution courses do not count toward the 11 credit total.

English - 4 credits

Social Studies - 3 credits

* Science - 3 credits (may include 1 credit of science through Ag curriculum)

* Math - 3 credits (may include 1 credit of math through Ag curriculum)

P.E./Safety Education - 1 credit

P.E./Health - 1 credit

Graduation Project requirement

Family and Consumer Science (FCS) requirement - Beginning with the Class of 2015, the FCS standards will be met through the general education curriculum.

*Agriculture courses counted as required academic credits for Ag students:

Concepts of Biotechnology – Science CP Veterinary Science – Science

Agribusiness – Math Ag Recordkeeping – Math

Ag students must take Algebra, Algebra II, and Geometry through the math department.

Ag students must take Earth Science, Biology, and Chemistry through the science department.

CREDIT REQUIREMENTS

To become a senior in good academic standing, students must pass all required classes during their freshmen, sophomore and junior year and have earned a minimum of 20 credits. Students who do not meet these requirements must recover their credits outside of the school day.

CAREER PREP, COLLEGE PREP, HONORS, and AP COURSES\

Career Prep courses are intended for students who fit one or more of the following criteria:

- Students planning to enter the work force after graduation.
- Career Prep courses DO NOT have a prefix in the course title.

College Prep courses are intended for students who fit one or more of the following criteria:

- students who read and write at or above grade level.
- students planning to attend post-secondary education.
- students with a strong academic record and work ethic.
- students should meet the grade requirement set forth by the departments.
- College Prep courses are designated by the prefix “CP” in the course title.

Honors and Advanced Placement courses are accelerated courses intended for students who meet ALL the following criteria:

- students who succeed in CP courses and desire an even more rigorous challenge.
- students who are more self-directed, self-motivated and are independent learners.
- **in order to receive AP credit for an Advanced Placement course, students must take the AP exam. If a student does not take the AP exam, Honors credit will be given for the class.**
- Students should meet the grade requirement set forth by the departments.
- Penn Manor High School Honors Program courses are designated by the word “Honors” in the course title. Advanced Placement courses are designated by the prefix “AP” in the course title.

CLASS WEIGHTING FOR CALCULATION OF GPA

AP+	AP courses	Honor courses	Career and College Prep
A=5.5	A=5	A=4.5	A=4
B=4.4	B=4	B=3.5	B=3
C=3.5	C=3	C=2.5	C=2
D=2.5	D=2	D=1.5	D=1

PENN MANOR HIGH SCHOOL DECILE RANKING POLICY

Penn Manor High School acknowledges the usefulness of a system of computing grade point average for secondary school students to inform students, parents, and others of their academic progress. Penn Manor High School utilizes a system of decile ranking based on grade point average for students in grades 9 through 12. Decile ranking (top 10%, 20%, 30%) will be computed to indicate a student's relative academic placement in relation to their peers.

Grade point average is determined by dividing the number of credits into the quality points earned. Extra quality points earned in weighted honors (+.5) and advanced placement (+1) courses will be included in determining GPA. Penn Manor students who take college level courses with the prior approval of the high school administration shall have grades from these courses included in determining their grade point average. College courses will receive additional weighting. Courses that are 100 level will receive honors weighting (+.5), courses that are 200 level will receive A.P. weighting (+1) and courses that are 300 level and above will receive AP+ weighting (+1.5). Students who take courses through a foreign studies program, with the prior approval of the high school administration, shall have grades included in determining their grade point average.

Grade point average will be used for the purpose of naming the valedictorian and salutatorian. The valedictorian will be awarded to the student with the highest G.P.A and the greatest number of Advanced Placement credits. The Salutatorian will be the student with the second highest G.P.A and number of Advanced Placement credits. To be considered for valedictorian and salutatorian honors, a student must attend classes at Penn Manor High School for at least six semesters. A student's grade point average and decile ranking shall be entered on his/her record and all transcripts and shall be subject to the board's policy on release of student records.

PENN MANOR HIGH SCHOOL HONORS PROGRAM

To graduate with Honors designation on diploma a student must earn the following in grades 10-12:

- Five Honors Courses with a minimum grade of B or better in each.
- Four Advanced Placement credits with a minimum grade of B or better in each.
- Three levels of the same Foreign Language in grades 9-12 with a grade of B or better in each.
 - Foreign Language courses taken in grade 9 count toward specific credit totals needed to graduate with Honors.
- All required academic courses must be College Prep level or higher.
 - Academic courses are defined as math, science, English and social studies.
- Students must maintain an overall, cumulative GPA of 3.75.

COUNSELING SERVICES

The Penn Manor High School Counseling Department provides a comprehensive counseling program to all students in grades 9 through 12. Career, Personal/Social, and Academic needs are the focus and students have the opportunity to participate in a number of activities. Each counselor is prepared to assist students with the course selection process, explore post-secondary options, and provide academic and individual counseling.

POST HIGH SCHOOL EDUCATION PLANNING FOR ANY POST-SECONDARY EDUCATION MUST BEGIN IN GRADE 9

With the increased opportunities for post-secondary education it is important that students carefully plan their future by investigating all possible options. Admission requirements to the many post-secondary institutions vary considerably. The counseling department maintains a website that contains resources from many post-secondary institutions. These resources are accessible to students who need information regarding specific entrance requirements and programs of study. Counselors are familiar with the current college admission policies and are available to confer with students and parents about future educational plans. There are several factors that generally influence acceptance to a given institution. Usually considered as the most important is the high school record. This includes courses taken, grades earned, decile ranking, extracurricular activities and test scores.

FOUR-YEAR PLANNING GUIDE

One of the goals at Penn Manor High School is to best prepare students for post secondary success. A part of this goal can be achieved by helping students enroll in courses that are both rigorous in nature and relevant to their aspirations. Students will be encouraged by counselors to use a four-year planning guide to meet their goals. The guide should help students make the most of their high school experience. If you would like more information about this process or post-secondary opportunities, please contact the counseling department.

NCAA FRESHMAN ELIGIBILITY STANDARDS

Students who plan to participate in college athletics must make sure that all NCAA academic requirements are met. For information regarding the rules students should meet with their coach and school counselor. For more information regarding the rules go to www.NCAA.org or www.eligibilitycenter.org.

COURSE CHANGES

Student schedules will be mailed home in July. Changes to student schedules will be made in August at the high school counseling office. A letter with schedule change dates will be sent home along with student schedules. To make a schedule change, you must meet with a counselor on one of the days listed in the letter. No changes will be made after this time period ends. Depending on the number of students who are requesting changes to their schedule there may be a wait to see a counselor.

The following parameters must be met in order for a scheduling change to occur:

- Student must have a valid educational reason for the schedule change.
- There must be an open seat available for the student in the new course.
- Counselor and administration must approve the change.

If you have any questions about student schedules or you are unable to attend a schedule change day, please call your counselor at 872-9520, ext. 1820.

PENN MANOR GRADUATION PROJECT

The Graduation Project is a requirement of the Penn Manor High School curriculum and a mandate from the Pennsylvania Department of Education. To complete the project each student will develop a cumulative career exploration project that will provide students with a post-secondary plan. The project is aligned with the Pennsylvania Career and Work Standards and the Lancaster County Career Pathways. The project will be used to guide students along their journey towards graduation. Components of a student's project will include interest inventories, resume development, community service, and interviews with employers. In November of the student's senior year, the student will present the project to a committee or a guidance counselor. The format of the presentation will be similar to an interview. After the presentation, the student will be scored with a rating of Advanced, Proficient, Basic, or Below Basic. In order to successfully complete the project a student must receive a rating of Proficient or Advanced. The staff of Penn Manor High School will serve as a resource to students as they develop their career exploration project.

NON-DISCRIMINATION POLICY

The Penn Manor School District, an equal opportunity employer, will not discriminate in employment, education programs or activities, based on race, sex, handicap or because a person is a disabled veteran or a veteran of the Vietnam era. This policy of nondiscrimination extends to all other legally protected classifications. Publication of this policy in this document is in accordance with state and federal laws including Title IX of the Educational Amendments of 1972 and Sections 503 and 504 of the Rehabilitation Act of 1973. For information regarding civil rights or grievance procedures, contact Dr. Michael G. Leichter, Section 504 Coordinator, at Penn Manor Administration Office (872-9500).

ENGLISH COURSE OFFERINGS AND SEQUENCES

The flowchart below lists the standard progression of courses within the English Department. However, other courses are offered that also fulfill English requirements. Please review the course descriptions to determine which courses are right for your goals, grade level, and grades in previous courses. Make sure you meet the prerequisites for the courses you want and that you obtain any teacher recommendations you need. Advanced Placement Literature and Advance Placement Composition are two-credit courses that meet for both semesters.

	Career Prep	College Prep	Honors
Grade 9	Foundations of Literacy (year)	CP Foundations of Literacy	Honors Foundations of Literacy
Grade 10	Foundations of Literacy II (year)	CP Foundations of Literacy II	Honors American Literature & Composition
Grade 11	Applications of Literacy & Composition	CP American Literature & Composition or CP World Literature	Honors British Literature & Composition
Grade 12	Senior Media Literacy	CP English Composition or CP World Literature	Honors English Composition, AP Literature; or AP Composition

Recommendations

Students are encouraged to take more than four English courses during their high school career. Courses in journalism, creative writing, and world literature, while not included in the traditional progression of courses, are recommended for enrichment. **There is a summer reading requirement for all College Prep, Honors, and AP level classes.** Consult the high school library website during the summer for details.

Additional Opportunities

RR Foundations of Literacy (year)

CP Creative Writing (available as an elective for juniors, available as an English credit for seniors)

CP Journalism (available as an elective for juniors, available as an English credit for seniors)

CP World Literature and Composition (available as an English credit for juniors and seniors)

MATHEMATICS COURSE OFFERINGS AND SEQUENCES

Please review this flowchart to determine which courses are right for your goals, grade level and grades in previous courses.

Courses should be chosen from the column which most suits your goals and needs. Make sure you meet the prerequisites for the courses you want and that you obtain any teacher recommendations you need. Most mathematics courses are offered in both the fall and spring, except for the advanced placement courses, which meet all year and are worth two credits.

Introductory Algebra A is offered only in the fall, and freshmen who select Introductory Algebra A must schedule Introductory Algebra B in the spring of the same school year in order to receive one math credit, although two credits will be earned. This is also the case for CP Algebra I A and B and Algebra II A and B.

Students considering college should note that CP Geometry/Trigonometry or Honors Geometry/Trigonometry should be completed before taking the SAT.

Students are encouraged to take more than four mathematics courses during their high school career.

	Career Prep	College Prep	Honors
Grade 9	Pre-Algebra A <u>and</u> B Introductory Algebra A <u>and</u> B	CP Algebra I A <u>and</u> B	Honors Advanced Algebra II-9 Honors Geometry/ Trigonometry
Grade 10	Introductory Algebra II A <u>and</u> B	CP Algebra II	Honors Geometry/ Trigonometry Honors Math Analysis
Grade 11	Geometry	CP Geometry/Trigonometry	Honors Math Analysis Honors Calculus or AP Calculus AB or AP Calculus BC or AP Statistics
Grade 12	Algebra III- Trigonometry	CP Precalculus or CP Statistics	Honors Calculus or AP Calculus AB or AP Calculus BC or AP Statistics

SCIENCE COURSE OFFERINGS AND SEQUENCES

Please review this flowchart to determine which courses are right for your goals, grade level and grades in previous courses.

Courses should be chosen from the column which most suits your goals and needs. Make sure you meet the prerequisites for the courses you want and obtain any teacher recommendations you need.

	Career Prep	College Prep	Honors
Grade 9	Earth Science	CP Earth Science	Honors Earth Science
Grade 10	Biology	CP Biology	Honors Biology
Grade 11	Chemistry <i>Chemistry/Physics (for students attending full day CTC senior year)</i>	CP Chemistry	Honors Chemistry
Grade 12	Physics	CP Physics of Mechanics	Honors Physics of Mechanics AP Physics

THE FOLLOWING COURSES ARE OFFERED AS ELECTIVES TO SOPHOMORES, JUNIORS AND SENIORS, BUT DO NOT COUNT TOWARD ONE OF THE FOUR REQUIRED SCIENCE COURSES:

Ecology & Animal Behavior
 CP Ecology & Animal Behavior
 CP Oceanography/Astronomy
 Forensics
 Honors Biology II
 Honors Chemistry II
 Concepts of Biotechnology (Agriculture)

CP Veterinary Science
 Honors Veterinary Science
 AP Biology
 AP Chemistry
 AP Environmental Science

- College Prep and Honors students who are planning to take any AP science course are encouraged to take more than one science course each year beginning with their freshman year. Students are encouraged to take more than four science courses during their high school career. Ecology/Animal Behavior, Forensics and CP Oceanography/Astronomy, Chemistry II and Biology II are recommended for enrichment either after completing the Earth Science, Biology, Chemistry, Physics sequence, or concurrently with another science course.
- Students who are planning to major in pre-med or a related area are strongly encouraged to take AP Chemistry and AP Biology.
- Students may earn 0.25 credits each year working independently on a project to be entered in the Lancaster County Science and Engineering Fair sponsored by the North Museum in March.

SOCIAL STUDIES COURSE OFFERINGS AND SEQUENCES

Please review this flowchart to determine which courses are right for your goals, grade level and grades in previous courses. Courses should be chosen from the column which most suits your goals and needs. Make sure you meet the prerequisites for the courses you want and that you obtain any teacher recommendations you need. **When planning your four-year social studies sequence, remember that a non-American course is required for graduation.**

Class of 2016 & 2017

	Career Prep	College Prep	Honors
Grade 9	US History II	CP US History II	Honors US History II
Grade 10	Civics and Government	CP Civics and Government	Honors Civics and Government
Grade 11 & 12 (must choose two of the three courses listed)	Eastern World History Western World History Economics	CP Eastern World History CP Western World History CP Economics	Honors Eastern World History Honors Western World History Honors Economics

Class of 2015

	Career Prep	College Prep	Honors
Grade 9	US History I	CP US History I	Honors US History I
Grade 10	Civics and Government	CP Civics and Government	Honors Civics and Government
Grade 11	Eastern World History Western World History	CP Eastern World History CP Western World History	Honors Eastern World History Honors Western World History
Grade 12	US History II	CP US History II	Honors US History II

Class of 2014

	Career Prep	College Prep	Honors
Grade 9	US History I	CP US History I	Honors US History I
Grade 10	US History II	CP US History II	Honors US History II
Grade 11	Modern World History	CP Modern World History	Honors Modern World History
Grade 12	Government & Economics	CP Government & Economics	Honors Government & Economics

Advanced Placement (AP) Course Offerings for Social Studies

- Any AP course can be taken junior or senior year, but students must take World History or AP European History to graduate.
- With the exception of AP Psychology, any of the courses listed below may count as a student's senior social studies credit:

AP US History AP Government AP European History AP Economics
 AP Psychology (elective only)

THE FOLLOWING COURSES ARE OFFERED AS ELECTIVES TO JUNIORS AND SENIORS, BUT DO NOT COUNT TOWARD ONE OF THE FOUR REQUIRED SOCIAL STUDIES COURSES:

- Military History
- Social Psychology
- The Turbulent 1960's
- World Religions
- Criminal Justice
- History of U.S. Immigration (1787 to present)

AGRICULTURE COURSE OFFERINGS AND SEQUENCES

Students who elect courses in the Agriculture Education Department are prepared for a future in employment immediately after high school and/or 2 or 4 year post-secondary education programs. Agriculture teachers are very instrumental in helping students with job placement and researching scholarship opportunities. Student placement in higher level agriculture classes will be based on the following criteria, unless specifically stated in the course description:

- Successful completion of an introductory class or previous level class with a minimum grade of 80%.
- Students who earn 70-79% may place in a higher level with teacher recommendation.
 - Determining grade will not include grading categories that do not reflect assessment, such as homework or extra credit.
- Performance on local assessments, such as practicums (hands-on assessments), midterms and final exams.
- Satisfactory completion of hands-on class activities
- Teacher recommendation

Students who successfully complete Ag Science 1, 2, 3, 4 and Ag Business will meet the Family and Consumer Science standards for graduation.

Students who are enrolled in ONE agriculture education course throughout the school year are invited to join the Manor FFA Chapter.

Agriculture Science at Penn Manor prepares students for careers by teaching Agriculture Science principles, small and large animal health and management, food science, plant science, leadership, problem solving, and communication skills. If you have any questions about the courses that best match your career plans, please see any agriculture education teacher. A nominal lab fee will be charged in most classes.

Career Paths in Agricultural Science									
	Production Agriculture		Horticulture/Floriculture		Veterinary/Vet Tech/Vet Assist.		Agribusiness		Agriculture and Food Science
Core Courses	Ag Science 1 Ag Science 2 Ag Science 3 Ag Science 4		Ag Science 1 Ag Science 2 Ag Science 3 Ag Science 4		Ag Science 1 Ag Science 2 Ag Science 3 Ag Science 4		Ag Science 1 Ag Science 2 Ag Science 3 Ag Science 4		Ag Science 1 Ag Science 2 Ag Science 3 Ag Science 4
Supporting Courses	Horticulture Agribusiness Ag Work Study		Horticulture Floriculture Agribusiness Ag Work Study		CP/Honors Vet Science Ag Work Study		Agribusiness College in the High School Agribusiness Ag Work Study		Biotechnology Wildlife and Natural Resources Management Ag Work Study
Other Ag Classes	Intro to Ag Mechanics Welding 1 Welding 2 Engines 1 Engines 2 Construction Agricultural Equipment		Intro to Ag Mechanics Welding 1 Engines 1 Construction Ag Equipment		Agribusiness Biology Chemistry		Accounting		Agribusiness

AGRICULTURE MECHANICS

Agriculture Mechanics at Penn Manor prepares students for careers by teaching mechanical principles, recordkeeping, problem solving, and communication skills. If you have any questions about the courses that best match your career plans, please see any Ag teacher.

Career Paths in Agriculture Mechanics

	Engines / Auto / Equipment Mechanic	Production Ag	Welding/Metal Working	Construction
Ag Mech Courses	Intro to Ag Mech Engines 1 Engines 2 Welding 1 Welding 2 Ag Equipment Ag Work Study	Intro to Ag Mech Engines 1 Engines 2 Welding 1 Welding 2 Ag Equipment Construction Ag Work Study	Intro to Ag Mech Welding 1 Welding 2 Engines 1 Ag Work Study	Intro to Ag Mech Welding 1 Welding 2 Engines 1 Construction Ag Work Study
EETC Cert	Yes	Yes	No	No
Other Ag Courses	Ag Business	Ag Business Ag Sci 1 Ag Sci 2 Ag Sci 3 Ag Sci 4 Horticulture	Ag Business	Ag Business
Supporting Courses	Algebra 2 Chemistry Physics	Algebra 2 Chemistry Physics	Algebra 2 Chemistry Physics	Algebra 2 Accounting

APPLIED ENGINEERING AND TECHNOLOGY COURSE OFFERINGS AND SEQUENCES

Students who elect courses in technology education are preparing for future employment after school and entry into two or four year secondary education programs. The table below lists the offerings and sequences of the Applied Engineering and Technology Department. Please review the course descriptions to determine which elective opportunities are right for your goals, grade level and grades in previous courses. Make sure you meet the prerequisites for the courses you wish to take and that you obtain any needed teacher recommendations.

Ninth grade students have one elective available in the Applied Engineering and Technology Department, the Exploring Technology course.

9th Grade Exploring Technology 710

Grade 9

Technology is everywhere! In this survey course, students may explore Design Drafting (AutoCAD and AutoCAD Inventor), Electronics, Graphic Arts (computer graphics), and Materials Production (woodworking). This is a unique opportunity to experience multiple technology areas in one course. As students rotate through the sections of Exploring Technology, they will create a wide variety of projects and develop a broad technological knowledge base. This course will help prepare students for the PSSA Science and Technology test. **A nominal lab fee will be charged to offset the cost of materials.**

10th, 11th & 12th grade students have the opportunity to choose from the following courses:

Course #	Elective 10 th	Elective 11th and 12th
711	Computer Design-Drafting	Computer Design-Drafting
715	Engineering & Model Building	Engineering & Model Building
713	Airbrushing/Digital Technical Illustration	Airbrushing/Digital Technical Illustration
718	3D Architectural Design & Model Building	3D Architectural Design & Model Building
722	Materials Processing	Materials Processing
727	Cabinetry I	Cabinetry I
728	Cabinetry II	Cabinetry II
731	i-Life for the Classroom	i-Life for the Classroom
745	Digital Photography	Digital Photography
749	Computer Animation I	Computer Animation I
750	Computer Animation II	Computer Animation II
751	Electronics I	Electronics I
752	Electronics II	Electronics II
753	Digital Electronics & Robotics	Digital Electronics & Robotics
773	Fundamentals of Web Design	Fundamentals of Web Design
758	Video Game Design	Video Game Design

Students who are enrolled in one Applied Engineering and Technology course throughout the school year are invited to join the Penn Manor TSA chapter. The Technology Student Association (TSA) is the only national student organization devoted exclusively to the needs of students with a strong interest in technology. Open to those who are enrolled in or who have completed Applied Engineering and Technology courses, TSA is composed of over 150,000 middle and high school students in 2,000 schools spanning 48 states. Educators, parents, and business leaders who believe in the need for a technologically literate society support TSA. Our members learn through exciting competitive events, leadership opportunities, and team activities.

ART COURSE OFFERINGS AND SEQUENCES

Student placement in higher level art classes will be based on successful completion of an introductory class or previous level class with a grade of 70%. Earning below a 70% in any art class will make a student ineligible for an art class in the next semester. A lab fee will be charged in most art classes.

Art I

Grade 9, 10, 11, 12

Drawing I

Grade 10, 11, 12

Drawing II

Grade 10, 11, 12

Ceramic Trends

Grade 10, 11, 12

Ceramic Traditions

Grade 10, 11, 12

Jewelry & Metals

Grade 10, 11, 12

Photography I

Grade 10 (if you have taken Art I and have signed permission from your instructor) 11, 12

Photography II

Grade 11, 12

Prerequisite: Minimum grade of "B" in Photography I required.

Fine Art I

Grade 10, 11, 12

Creative Publications Design

Grade 9, 10, 11, 12

Prerequisite: Yearbook adviser approval after formal application.

Students must apply in February and win advisor and editor invitation in order to enroll in this class.

Honors Creative Publications Design

Grade 11, 12

Prerequisite: Yearbook adviser approval after formal application.

Commercial Art

Grade 10, 11, 12

A.P Studio Art (Drawing Portfolio)

Grade 11, 12

Prerequisite: Minimum grade of a "B" in three previous art classes, portfolio review, approval from Mrs. Gingerich, and successful completion of summer artwork and reading.

Video Production

Grade 9, 10, 11, 12

Television Production

Grade 9, 10, 11, 12

Prerequisite: Video Production.

BUSINESS TECHNOLOGIES COURSE OFFERINGS AND SEQUENCES

Student placement in higher level Business Education classes will be based on the following criteria, unless specifically stated in the course description:

- Successful completion of an introductory class or previous level class with a grade of 70% or higher.
 - Determining grade will not include grading categories that do not reflect assessment, such as homework or extra credit.
- Performance on local assessment, such as midterms and final exams.
- Participation in class activities
- Teacher recommendation

Accounting I

Grade 10, 11, 12

Accounting II

Grade 11, 12

Prerequisite: Minimum grade of "B" in Accounting I

Accounting III (Independent Study)

Grade 12

Prerequisite: Accounting II and teacher recommendation

Marketing & Law for Life

Grade 10, 11, 12

This course will count as a senior social studies credit for the Class of 2013 & 2014 only.

International Business & Investing

Grade 11, 12

Prerequisite: Minimum grade of "C" in Algebra I or minimum of "B" in Introduction to Algebra B

Entrepreneurship

Grade 10, 11, 12

Prerequisite: Students interested in this course must submit an application as part of course registration. See counseling office or Mrs. Craig for application.

FAMILY AND CONSUMER SCIENCES OFFERINGS AND SEQUENCES

The study of Family and Consumer Sciences will introduce a student to the study of information and resources to empower individuals and strengthen families!

Introductory FCS Skills class is available to ninth grade students entering Penn Manor High School. This will provide an introduction to all areas of Family and Consumer Sciences, which will be available as electives as upperclassman. All other courses are content specific.

Student placement in advanced Family and Consumer Sciences classes will be based on the following criteria, unless specifically stated in the course description:

- Successful completion of an introductory or previous level course with a minimum grade of 70%.
- Determining grade will not include grading categories that do not reflect assessment, such as homework or extra credit.
- Performance on local assessments, such as midterms and final exams.
- Participation in class activities
- Teacher recommendation

Grade 9	Grade 10	Grade 11	Grade 12
FCS Skills	Foods & Nutrition	Foods & Nutrition	Foods & Nutrition
	Child Development	Child Development	Child Development
	Fashion & Design Foundations	Fashion & Design Foundations	Fashion & Design Foundations
		Living On Your Own	Living on Your Own
		Advanced Foods & Nutrition	Advanced Foods & Nutrition
		Advanced Fashion & Design	Advanced Fashion & Design

Note: Advanced Foods and Nutrition is available only in alternating years: 2013, 2015, 2017, etc.

FOREIGN LANGUAGE COURSE OFFERINGS AND SEQUENCES

The study of foreign languages is encouraged for students in all pathways as it enhances overall communication skills, develops an appreciation for other cultures and provides a competitive edge to job applicants in today's global market.

Each foreign language course in levels I, II, or III are considered college-prep level courses. Students may register for the next course provided that the following criteria are met:

- Successful completion of the previous level class with a grade of 70% or higher. Determining grade will not include categories that do not reflect assessment, such as homework or extra credit.
- Student performance on local assessments, such as midterms & final exams.
- Participation in class activities and use of the target language.
- Teacher recommendation.

Foreign Language courses are a part of the Honors program requirement. Students will need to complete three semesters of high school courses, with a minimum grade of B in each course. Please refer to high school policies to ensure that all requirements are fulfilled.

Full-year AP courses are offered in German and Spanish. Students must have earned a B or better in the prerequisite course, and receive the recommendation of their teacher to register for those courses.

Course Offerings:

French I	German I	Italian I	Spanish I
French II	German II	Italian II	Spanish II
French III	German III	Italian III	Spanish III
Honors French IV	* Honors German IV		Honors Spanish IV
	* AP German		AP Spanish

*German IV and AP German will be offered alternating years.

LEARNING SUPPORT COURSE OFFERINGS AND SEQUENCES

LEVELS OF SUPPORT

Itinerant- Student is assigned to all regular education classes. A Learning Support teacher tracks student progress but is not teaching the class. The class is taught by a Regular Education teacher.

Supplemental- Students assigned to at least two Regular Education classes and two Learning Support classes. The students come in contact daily with a Learning Support teacher.

Full time - Classes taught by a Learning Support teacher that covers course content ranging from middle school to high school grade levels. Students are in a learning support setting for all classes.

RR Functional Reading 034

This course is designed for students whose IEP team determines that extensive instruction in phonetics decoding is required to develop reading fluency and comprehension.

RR Functional Math 036

This course is part of the Functional Academics Program offered to IEP students as per recommendation of his/her IEP team. This course will focus on functional mathematics and uses a scripted math program.

RR Social Studies 014

Part of the Functional Academics Program offered to IEP students as per recommendation by his/her IEP teacher.

RR Science 021

Part of the Functional Academics Program offered to IEP students as recommended by his/her IEP team.

RR Foundations of Literacy 9/10 029

This course is designed for students whose IEP team determines that extensive practice in reading comprehension and writing.

RR Transition English 11/12 031

Designed for 11th or 12th grade students whose IEP team determines a need to develop reading strategies for the world of work.

RR Math 037

This course is designed for students whose IEP team recommends instruction in basic math skills.

RR Math 038

This course is designed for students whose IEP team recommends instruction in basic math skills.

RR Pre-Algebra 040

First semester of a year-long course designed for students whose IEP team recommends development of Pre-Algebra skills.

RR Pre-Algebra 041

Second semester of a year-long course designed for students whose IEP team recommends development of Pre-Algebra skills.

RR Transition Math 11/12 042

Designed for 11th or 12th grade students whose IEP team has determined that the student needs to work on Algebra I and transition math skills.

ES Math 051

General math development course designed to prepare Emotional Support students who as determined by their IEP team need to develop basic math skills or Pre-Algebra skills in a small group setting.

ES Communication Arts 052

This course is designed for students whose IEP team determines a need for ES small group instruction with modifications to the regular education curriculum.

ES Social Studies 054

This course is a general social studies development course designed to prepare Emotional Support students whose team determine that social studies skills need to be developed within the Emotional Support classroom.

ES Science 055

This course is designed for students whose I.E.P. team recommends ES small group instruction with modifications to the regular education curriculum.

ES CBI 059

This course is a general development course designed to prepare ES students whose IEP team determine that community based instruction skills need to be developed.

MUSIC COURSE OFFERINGS AND SEQUENCES

Performance Ensembles **Grade 9, 10, 11, 12** **Prerequisite: Permission of Instructor**

Band

- First marking period emphasis is marching band. The remaining three marking periods are symphonic band.

Orchestra

- Students who enroll in orchestra must play a string instrument (violin, viola, cello, or double bass).

Chorus

- Students who enroll in chorus will have the opportunity to develop vocal and musical skills through performances. All boys who are interested in chorus may sign up for Full Chorus. All 9th grade girls should sign up for Girls Chorus and should not sign-up for Full Chorus without instructor permission.

- Honors Band **Grade 11, 12**

- Honors Orchestra **Grade 11, 12**

- Honors Chorus **Grade 11, 12**

- Prerequisite: Minimum of one year in Music Ensemble, grade of 85% or higher, with permission of instructor.
- Students will fulfill the requirements of performance ensemble, and will be required to meet the following additional requirements: 1) Prepare and audition for County/District level ensembles, 2) complete certain assignments such as papers, critiques etc., and 3) performance in one recital each school year.

- Girls Chorus

This chorus is designed for any girl in grades 9-12. This course will meet every day during the spring semester.

- Manor Singers

This is a select group, designed for vocal students with exceptional singing/musical abilities. The Manor Singers will be auditioned in January or February of the current school year to fill spots left by those who will graduate.

Music Electives

Class Piano I **Grade 9, 10, 11, 12**

Class Piano II **Grade 9, 10, 11, 12**

Class Piano III **Grade 10, 11, 12**

- The courses are designed consecutively to teach the beginning high school student how to play the piano. Class size is limited by the number of available pianos.

Honors Music Theory I for Band, Orchestra, or Chorus Students (Meets opposite of ensembles)

Grade 10, 11, 12 **Prerequisite: Permission of Instructor**

- Designed for current ensemble students to achieve a basic understanding of the components of music.

Music Theory I (Meets daily for one semester)

Grade 9, 10, 11, 12

- Appropriate for any student who wishes to learn more about the "mechanics" of music.

Honors Music Theory II for BOC Students (Meets opposite of ensembles)

Grade 11, 12 **Prerequisite: Honors Music Theory I or Instructor permission**

History of Rock **Grade 9, 10, 11, 12**

Guitar I **Grade 9, 10, 11, 12**

- Guitar I is for students with little or no experience on the guitar with emphasis on learning to read music.

Guitar II **Grade 9, 10, 11, 12** **Prerequisite: Guitar I**

- Guitar II is designed as an extension for Guitar I with emphasis placed on ensemble performances.

PHYSICAL EDUCATION, HEALTH and SAFETY EDUCATION COURSE OFFERINGS AND SEQUENCES

Required: Grade 9: Physical Education/Health 9
 Grade 10: Physical Education/Safety Education 10

Physical Education/Health 9 or Physical Education/Health 9 (full year course with Music)

This course is required of all ninth grade students. The class rotates with three health classes and three physical education classes per cycle.

Physical Education/Safety Education 10 or Physical Education/Safety Education 10 (full year course with Music)

This course is required of all tenth grade students. Safety Education will require 22 days of the semester and the remaining days will be physical education.

Electives: Grades 11 and 12 Only. *(Students must earn a minimum of a C in required courses and students desiring to take a second PE elective must earn a "B" in their previous PE elective class.)*

Physical Education/Anatomy *(Prerequisite: Minimum grade of "B" in P.E./Health 9, and P.E./Safety Ed. 10)*

This elective course is recommended for those students who are interested in studying physical education, physical therapy, or nursing.

Fitness Training/Current Health Issues I

This elective course is designed to bring about, by means of progressive resistance exercise, changes in the body as manifested in increased strength, endurance and flexibility.

Fitness Training/Current Health Issues II

This elective course is designed for students who have successfully completed Fitness Training/ Current Health Issues I.

Sports Medicine and Lifetime Sports *(Prerequisite: Minimum grade of "B" in P.E./Health 9, and P.E./Safety Ed. 10)*

This elective course consists of prevention, evaluation, treatment and rehabilitation of injuries, nutrition and legal issues. Special emphasis will be placed on sports related injuries.

Advanced Physical Education/Sports Officiating

This elective course is recommended for students interested in officiating at the elementary, recreational or PIAA levels. Students will be given the opportunity to learn and develop various successful sports officiating skills and also the specific skills associated with their sport(s) of interest.

Women's Health and Self Defense

This elective course consists of three blocks of women's health issues and three blocks of self-defense in each cycle. The health portion is devoted to important issues facing young women as well as topics of concern as young women age. The self-defense portion is devoted to preparing the student to avoid potential dangerous situations and to acquire physical skills to defend herself in case of a physical assault.